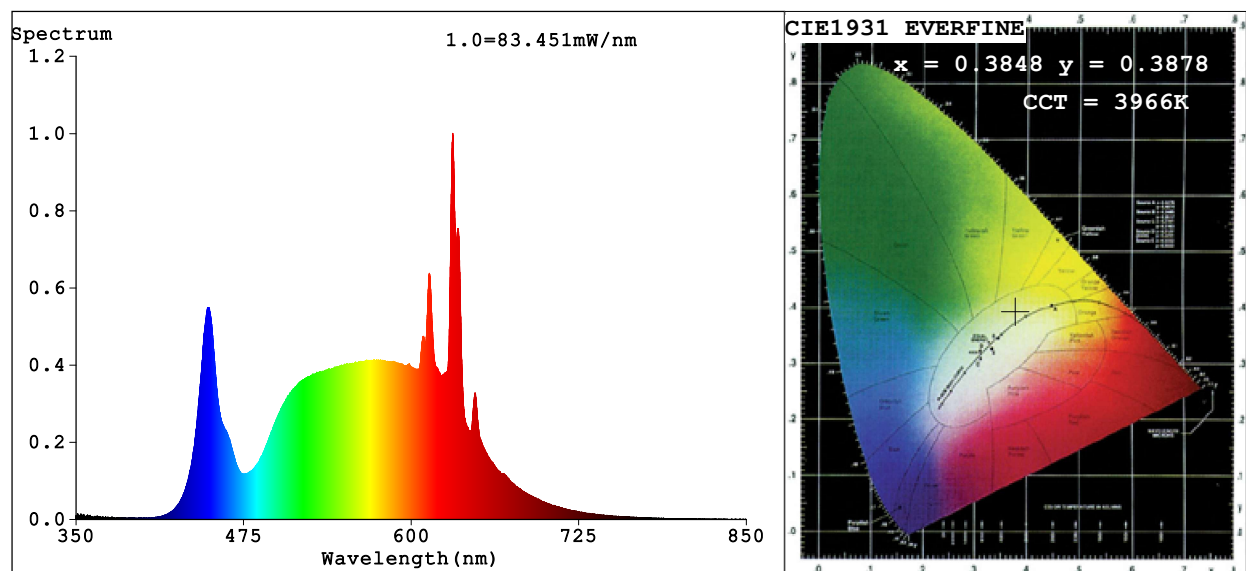


Spectrum Test Report



Color Parameters:

Chromaticity Coordinate: $x=0.3848$ $y=0.3878$ $u'=0.2236$ $v'=0.5070$

CCT=3966K (Duv=0.0038) Dominant WL:Ld =577.4nm Purity=31.9%

Ratio:R=19.7% G=76.9% B=3.4%; Peak WL:Lp=630.9nm FWHM=8.6nm

Render Index:Ra=90.8 CRI=86.5 TM30:Rf=90 Rg=100

R1 =92 R2 =92 R3 =91 R4 =93 R5 =90 R6 =89 R7 =94

R8 =86 R9 =60 R10=79 R11=93 R12=68 R13=91 R14=94 R15=88

Photo Parameters:

Flux = 2331 lm Eff. : 129.89 lm/W Fe = 7.026 W

Electrical parameters:

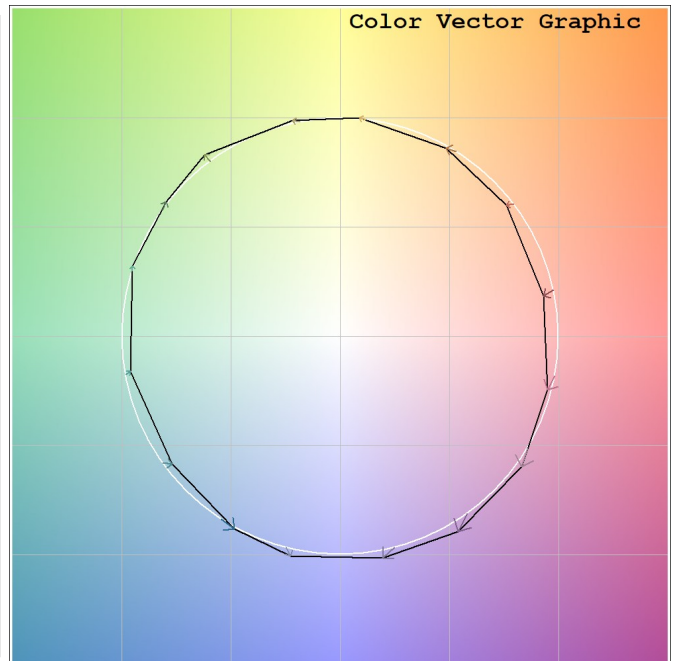
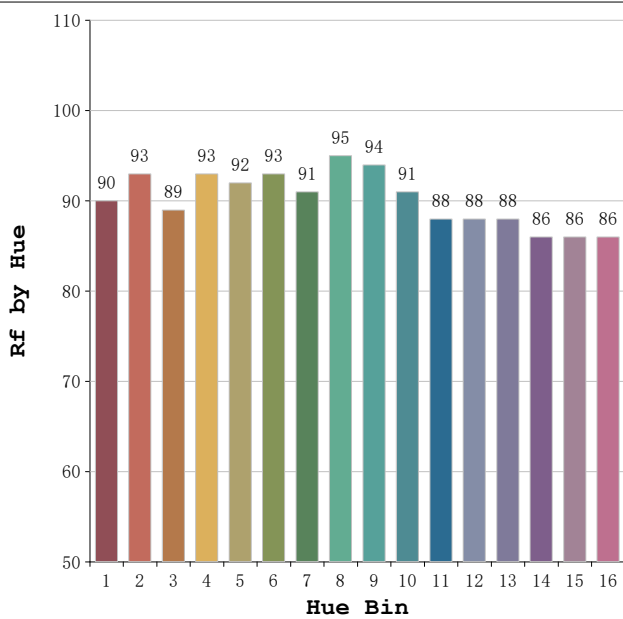
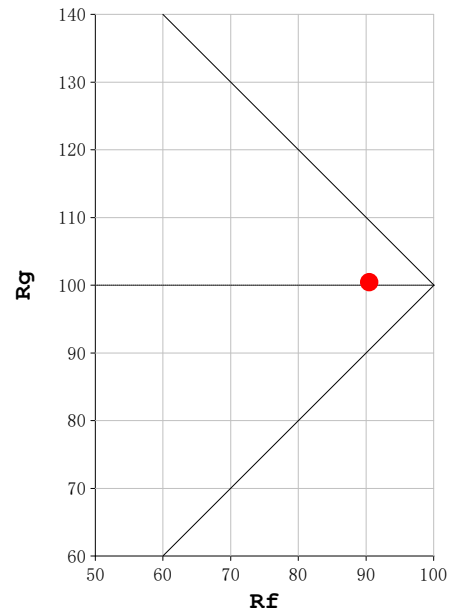
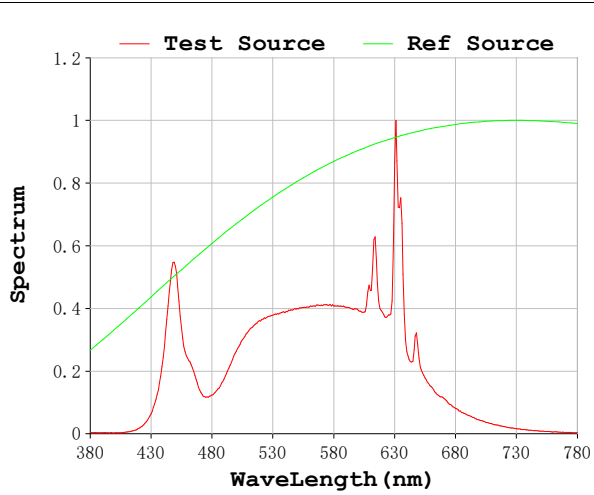
V = 230.16 V I = 0.08692 A P = 17.94 W PF = 0.8970

Status: Integral T = 377 ms Ip = 51304 (78%)

Model:Spotia 18w Blanco
Tester:Sergio Carneros
Temperature:20Deg
Manufacturer:Luz Negra

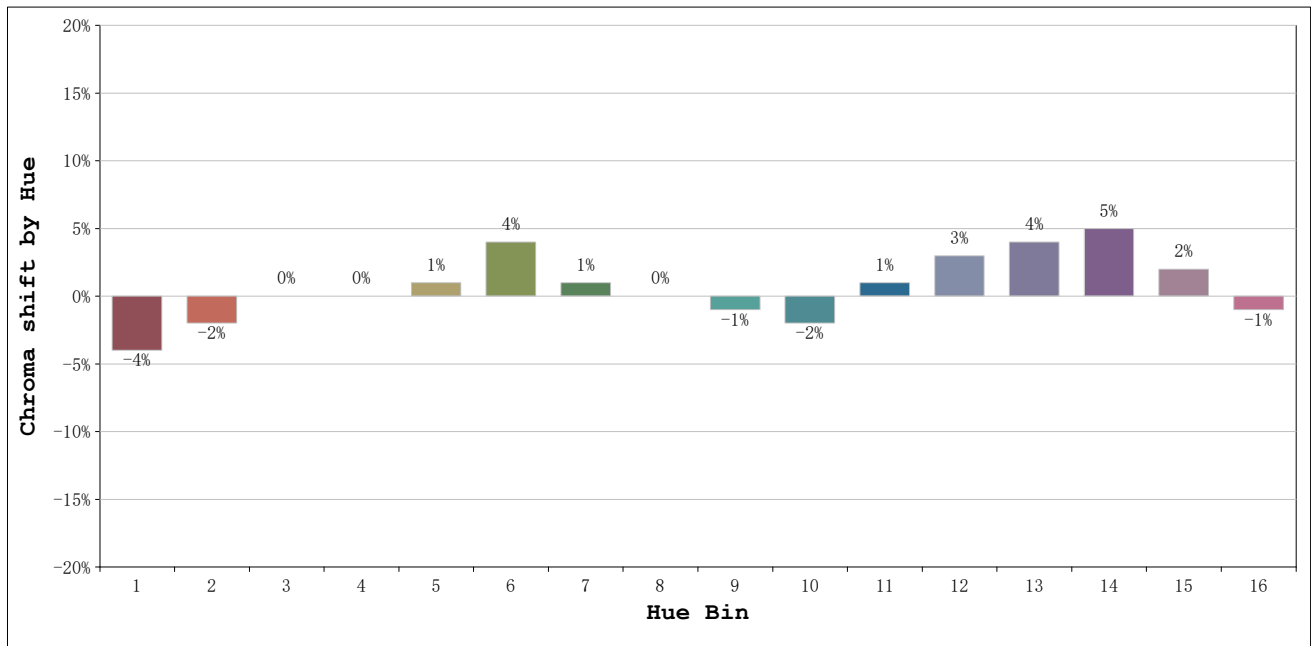
Number:4000k 18°
Date:2026-03-23 15:37:45
Humidity:50%
Remarks:1 unidad

Rf: 90 **CCT: 3966 K** **u': 0.2236**
Rg: 100 **Duv: 0.0038** **v': 0.5070**



Model:Spotia 18w Blanco
 Tester:Sergio Carneros
 Temperature:20Deg
 Manufacturer:Luz Negra

Number:4000k 18°
 Date:2026-03-23 15:37:45
 Humidity:50%
 Remarks:1 unidad



			Graphic shift(%)	
Hue Bin	Hue Angle	Rf	Chroma	Hue
1	0.0° - 22.5°	90	-4	-1
2	22.5° - 45.0°	93	-2	1
3	45.0° - 67.5°	89	0	5
4	67.5° - 90.0°	93	0	3
5	90.0° - 112.5°	92	1	3
6	112.5° - 135.0°	93	4	0
7	135.0° - 157.5°	91	1	-3
8	157.5° - 180.0°	95	0	-2
9	180.0° - 202.5°	94	-1	0
10	202.5° - 225.0°	91	-2	3
11	225.0° - 247.5°	88	1	8
12	247.5° - 270.0°	88	3	3
13	270.0° - 292.5°	88	4	-5
14	292.5° - 315.0°	86	5	-7
15	315.0° - 337.5°	86	2	-7
16	337.5° - 360.0°	86	-1	-6

Model:Spotia 18w Blanco
 Tester:Sergio Carneros
 Temperature:20Deg
 Manufacturer:Luz Negra

Number:4000k 18°
 Date:2026-03-23 15:37:45
 Humidity:50%
 Remarks:1 unidad